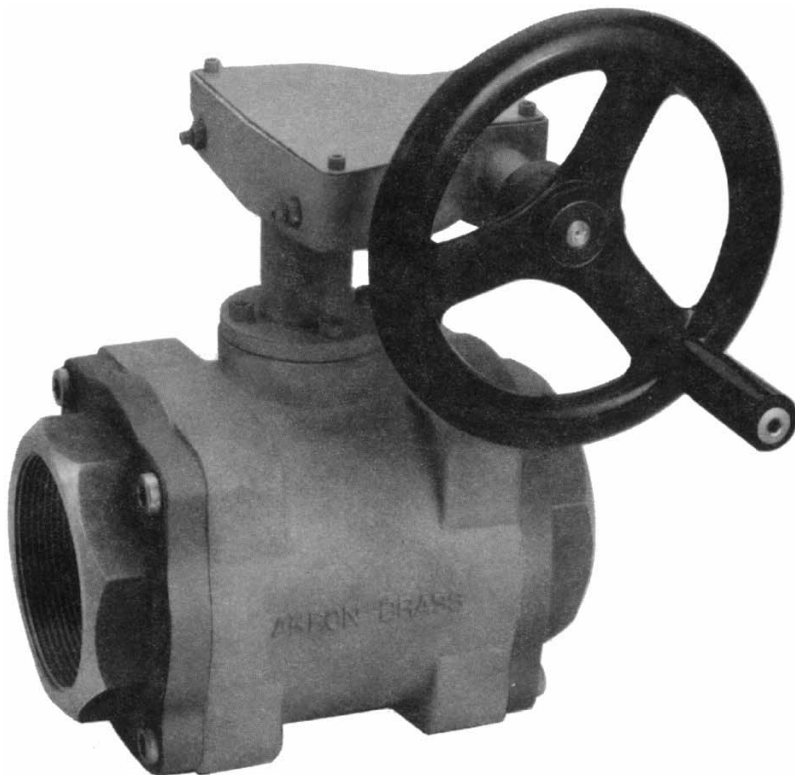
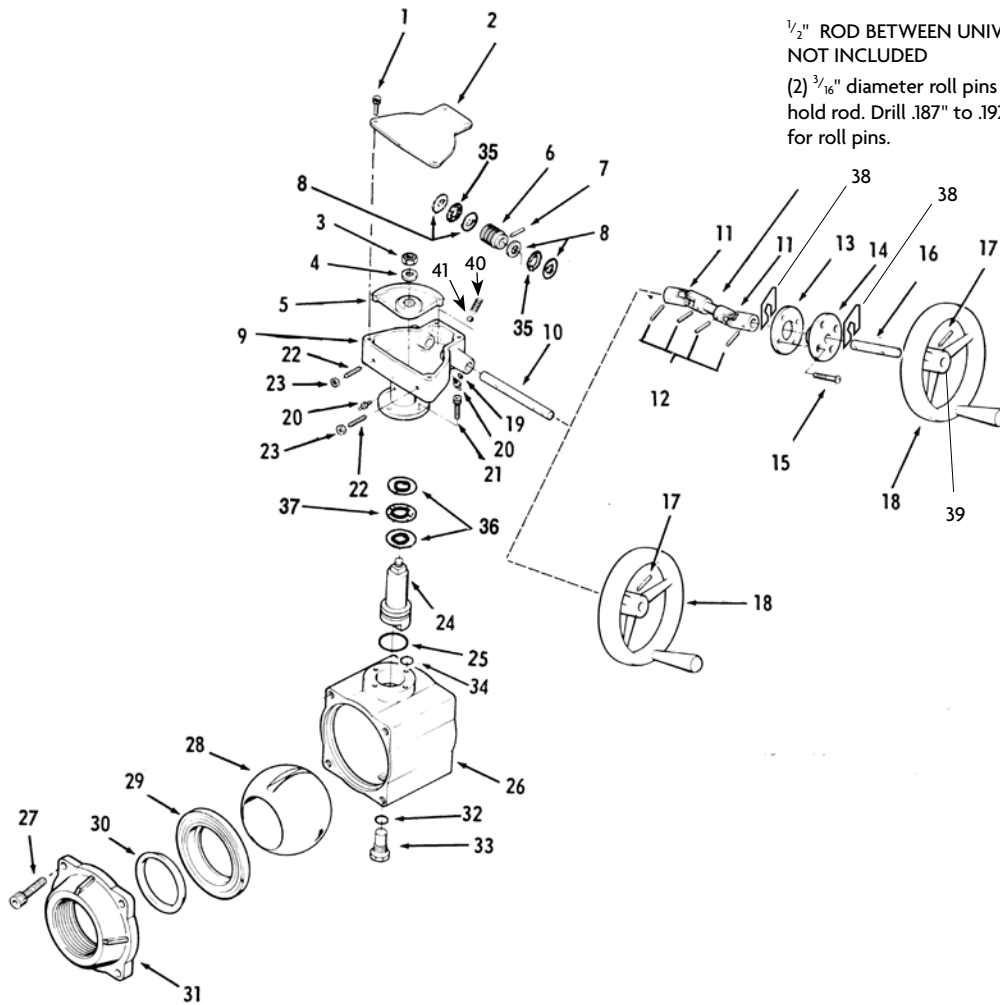




STYLE 8908 FIELD SERVICE KIT FOR 8940 4" SWING-OUT™ VALVE



For assistance or further information, please contact the Technical Service Dept.:
Akron Brass Co., P.O. Box 86, Wooster, Ohio 44691, 330-264-5678
Akron Manufacturing Co., P.O. Box 280, Aylmer, Ontario, N5H 2R9, 519-773-8431



1/2" ROD BETWEEN UNIVERSAL JOINTS
NOT INCLUDED

(2) 3/16" diameter roll pins are included to hold rod. Drill .187" to .192" holes in rod for roll pins.

Item No.	Description	Part Number	Quantity
1	Screw	7-63-038	4
2	Gear Housing Cover	7-07-195	1
3	Jam Hex Nut	7-34-059	1
4	Washer	7-84-083	1
5	Gear Sector	109048	1
6	Worm Gear	106611	1
7	Roll Pin	7-44-068	1
8	Thrust Washer	7-84-111	4
9	Gear Housing	106616	1
10	Handwheel Shaft (7.5" long)	110003	1
11	Universal Joint	106721†	2
12*	Roll Pin	7-44-084	4
13	Back Plate	106612	1
14	Handwheel Bracket	110003	1
15	Screw	7-63-063	4
16	Handwheel Shaft (4" long)	7-69-478	1
17	Roll Pin	7-44-107	1
18	Handwheel	7-21-228	1
19	Set Screw	7-65-112	1
20	Grease Fitting	7-13-034	2
21	Screw	7-63-028	4

Item No.	Description	Part Number	Quantity
22	Set Screw	7-65-136	2
28	Hex Nut	7-34-061	2
24	Ball Trunnion	7-73-237	1
25*	O-Ring	7-57-006	1
26	Valve Body	106617	1
27	Screw	7-65-140	8
28*	Valve Ball	703979	1
29*	Valve Seat	7-69-569	2
30	Seat Ring	106613	2
31	Adapter**	—	2
32*	O-Ring	7-57-002	1
33	Threaded Trunnion	7-73-180	1
34*	O-Ring	7-57-005	1
35	Needle Bearing	7-03-453	2
36	Thrust Washer	7-84-115	2
37	Thrust Bearing	7-03-466	1
38	Spacer	7-68-259	2
39	Open Tag	7-73-185	1
40	Allen Screw	7-65-008	1
41	Nylon Ball	7-04-031	1

*Indicated parts included in Field Service Kit #8908

**Please see catalog for options.

† Universal Joint Kit - P/N 109322 contains 2 Universal Joints

INSTRUCTIONS FOR REPAIRING THE 8940 SWING-OUT VALVE

NOTE: A local mount is where the handwheel is connected directly to the valve. A remote mount is where the handwheel is connected to the valve through a series of universal joints.

DISASSEMBLY - Universal Joints - Remote Mounting

1. Remove roll pin (12) closest to actuator shaft (10) in order to remove universal joint from the actuator shaft.
2. Remove the four screws (15) from the panel to allow you to remove the drive shaft assembly from the actuator shaft.

DISASSEMBLY - Handwheel - Local Mounting

NOTE: This step may not be needed if you have clearance to swing the valve body out.

1. Remove roll pin (17) to remove handwheel (18).

DISASSEMBLY

1. Loosen the four mounting screws (21) to loosen the gear box from the body, but do not remove at this time.
2. Remove three sets of screws (27) and loosen the fourth set to allow the valve body to swing out.
3. Remove the seat (29) and seat ring (30), discard (29) and save the brass seat ring (30).
4. Remove mounting screws (21) and note the position of the gear box. Remove gear box (9) and discard O-ring (25) located on trunnion shaft (24) and O-Ring (34) on valve neck.
5. Unscrew threaded trunnion (33) and discard O-ring (32).
6. Now remove valve ball (28) from body and discard.

REASSEMBLY

NOTE: Use Parker O-ring lube or equivalent petroleum-based lubricant on all O-rings.

1. With a 10" or larger flat file remove any paint, corrosion or raised lip around bolt holes, from the ends of the body (26) and adapters (31).

CAUTION: Always file diagonally and keep the file touching both sides of the valve body. The surfaces must remain flat.

2. Install the new valve ball (28).
3. Replace O-ring (32) on trunnion (33).
4. Screw in threaded trunnion (33) into the valve body.
5. Replace O-ring (25) located on shaft (24) and O-ring (34) on valve neck.
6. Install the gear box as originally positioned. Aligning the trunnion and ball slot, tighten down screws (21).
7. Remove the gear housing cover (2) by removing the four screws (1). Check to make sure the sector (5) and worm gear (6) are well greased with low-temp lubriplate or equivalent.
8. Install gear housing cover (2) and screws (1).
9. Insert the seat rings (30) into the seats (29) and insert the seats into the valve body.
10. Swing the valve body back into line and loosely install the adapter bolts (27).
11. Tighten the adapter bolts in an x-pattern and torque to 60-70 ft. lb.

REASSEMBLY - Handwheel - Local Mounting

1. Reassemble handwheel (18) with roll pin (17).

REASSEMBLY - Universal Joints - Remote Mounting

1. Slide universal joint (11) over actuator shaft (10) and insert roll pin (12).
2. Insert the four screws (15) in the panel and tighten.

MAINTENANCE INSTRUCTIONS

Do not lubricate the ball or seats. Lubricants can collect dirt and grit which may cause excessive wear. Occasionally, flow water through all valves to clear dirt and debris.

OPERATING INSTRUCTIONS

Do not exceed 300 psi of operating pressure.

⚠WARNING

Under certain conditions, pressurized air may become trapped inside a valve assembly when the ball is in the closed position.

To avoid bodily injury:

- 1) Ensure that the attached piping is not pressurized
- 2) Open the valve before disassembling. This will release any pressurized air that may be trapped in the valve

If for some reason the valve cannot be opened, or if you are unsure of the ball position, begin the disassembly by removing the valve adapters (item 31).

STYLE 8908

USE THESE ILLUSTRATIONS TO IDENTIFY THE VARIOUS PARTS IN THIS KIT



P/N 7-57-002
Threaded Trunnion O-Ring (32)



P/N 7-57-005 (34)



P/N 7-44-084
Roll Pin (12)



P/N 7-57-006
O-Ring Trunnion Shaft (25)

NOT SHOWN

- 1 - P/N 703979
Valve Ball (28)
- 2 - P/N 7-69-349
Valve Seat (29)



ISO 9001 REGISTERED COMPANY

PHONE: 330.264.5678 or 800.228.1161 | FAX: 330.264.2944 or 800.531.7335 | akronbrass.com

REVISED: 11/11

WARRANTY AND DISCLAIMER: We warrant Akron Brass products for a period of five (5) years after purchase against defects in materials or workmanship. Akron Brass will repair or replace product which fails to satisfy this warranty. Repair or replacement shall be at the discretion of Akron Brass. Products must be promptly returned to Akron Brass for warranty service.

We will not be responsible for: wear and tear; any improper installation, use, maintenance or storage; negligence of the owner or user; repair or modification after delivery; damage; failure to follow our instructions or recommendations; or anything else beyond our control. WE MAKE NO WARRANTIES, EXPRESS OR IMPLIED, OTHER THAN THOSE INCLUDED IN THIS WARRANTY STATEMENT, AND WE DISCLAIM ANY IMPLIED WARRANTY OF MERCHANTABILITY OR FITNESS FOR ANY PARTICULAR PURPOSE. Further, we will not be responsible for any consequential, incidental or indirect damages (including, but not limited to, any loss of profits) from any cause whatsoever. No person has authority to change this warranty.

© Akron Brass Company, 2011 All rights reserved. No portion of this can be reproduced without the express written consent of Akron Brass Company.